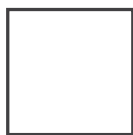


# INSTALLATION AND USER MANUAL PLAYGROUND



6'7" x 6'7" / 200 x 200 cm



100 % made  
in Europe



2.5 million  
jumps guarantee



62.7 % softer  
bounce absorption

### **Thank you for choosing Akrobat Trampoline!**

Your trampoline is so much more than just another outdoor toy. It was designed to provide engaging playtime, create fun memories and active exercise to all members of the family, no matter what age. Akrobat trampolines are built to last. Made of best quality European materials and as a result of skilled craftsmanship, your trampoline will serve you for years to come.

Safety comes first! In order to achieve the best trampolining experience that will keep you fit and energised, please read these assembly instructions and safety recommendations thoroughly to minimize any chances of injuries.

# 1. WARNINGS!

**Read this manual carefully before assembling and using your trampoline. Keep this manual for future reference.**

The responsibility of the owner is to ensure that all users of the product are fully informed about the proper use of this trampoline and all safety precautions.

**Maximum user weight is defined by the size of the trampoline:**




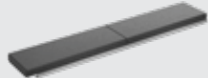

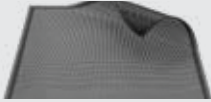

**6'7" x 6'7" / 200 x 200 cm**

**100 kg / 220 lbs**

- Adult supervision and instruction required at all times.
- The trampoline has to be assembled by an adult and cautiously inspected before first use.
- Minors must be supervised by an adult person regardless of their skills or training. Be sure to prevent access to the trampoline without proper supervision.
- Check the trampoline before each use. Regular maintenance check-ups of the trampoline and trampoline parts are necessary to prevent injuries. Keeping the trampoline impeccable will prolong the lifetime of your trampoline.
- Serious injury, paralysis or even death can occur if the trampoline is not used properly.
- This trampoline is for outdoor use only.
- Not suitable for children under 36 months - small parts, choking hazard.
- Wear clothing free of drawstrings, hooks, loops or anything that could get caught while using the trampoline/enclosure and result in entanglement. Do not attach anything to the enclosure that is not a manufacturer-approved accessory or part of the enclosure system.
- Properly secure the trampoline/enclosure when not in use. Protect it against unauthorized use.
- Jumping on the trampoline is not recommended during pregnancy.
- Do not use the trampoline under the influence of alcohol, drugs or heavy medication.
- Keep all sources of heat and flames away from the product.
- The jumping mat should be kept clean and dry. Jumping on a wet jumping mat is prohibited in order to avoid slips and falls.
- Remove footwear before jumping on the trampoline.
- Do not eat food, sweets or chew gum when bouncing.
- Bounce in the center of the mat.
- Stop bouncing by flexing the knees as feet come in contact with the trampoline bed. Learn this skill before attempting other jumps.
- Do not exit by a jump – always walk on and off. It is a dangerous practice to jump from the trampoline to the floor or ground when dismounting, or to jump onto the trampoline when mounting. Do not use the trampoline as a springboard to other objects. Do not jump from other objects, buildings, or surfaces, onto the trampoline, or into or over the trampoline enclosure.
- Avoid bouncing too high or for too long, make regular breaks. Stay low to control your bounce and repeat landing in the center of the trampoline. Always control your bounce. Control is more important than height.
- Do not attempt or allow somersaults. Landing on the head or neck can cause serious injury, paralysis, or death, even when landing in the middle of the bed.
- No more than one person is allowed to use the trampoline at a time. Collision hazard: multiple jumpers increase the chances of loss of control and this can result in serious injury.
- Misuse or abuse of the trampoline is dangerous and can result in serious injury.
- Glasses, jewellery and similar objects should be taken off before entering the trampoline. Empty your pockets and keep your hands free when jumping. Always jump on the middle of the jumping mat.
- Do not sit on the trampoline frame plates and do not stand on the edge while another person is jumping.
- Keep small children away from the trampoline while others are bouncing on it, because the edge can move in and out vigorously.
- Trampoline should be placed on a level grass surface or soft surface such as sand or bark. Do not use trampoline on hard surfaces as asphalt, concrete or other similar surfaces. Do not place trampoline around swimming pools, swings, slides, climbing walls etc.
- Do not use the trampoline in windy weather. If you are using a safety net, remove and store it for better weather conditions.
- Installation of this trampoline requires digging a trampoline pit. Before installing the trampoline make sure that your ground will drain well. We advise to get help by a professional if you are not sure about the quality of the ground or other issues regarding the digging.
- Remove all hard objects around and under the trampoline. There should be no objects – such as fences, roofing, tree branches, laundry ropes, electrical cables etc. – anywhere near or above the trampoline. Clear the surroundings for at least 2 metres in every direction.
- Ensure there is 6 meters free head space above the trampoline.
- Each modification made to the trampoline must be approved by the manufacturer.
- When moving the trampoline, disassemble it in reverse order of assembling. Move to desired location and re-assemble according to these instructions.
- In our commitment to customer satisfaction and safety, please check our website regularly for important customer updates and all trampoline specifications.
- For additional information concerning the trampoline equipment, please contact the manufacturer or regularly check our website for important customer updates.

## 2. TRAMPOLINE PARTS

PLAYGROUND  
6'7" x 6'7" / 200 x 200 cm

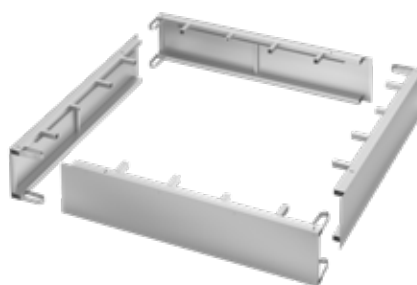
<b>Part A</b>	Metal frame	4 pcs	
<b>Part B</b>	Rubber tiles-frame plates	4 pcs	
<b>Part C</b>	Springs 14 cm	60 pcs	
<b>Part D</b>	Jumping mat	1 pc	
<b>Part E</b>	Spring tool	1 pc	

### 3. ASSEMBLY AND INSTALLATION

We recommend at least two people to assemble the trampoline. Use gloves to protect your hands from pinch points and sharp points during assembly. Do not apply excessive force during assembly that will cause damage to the product.

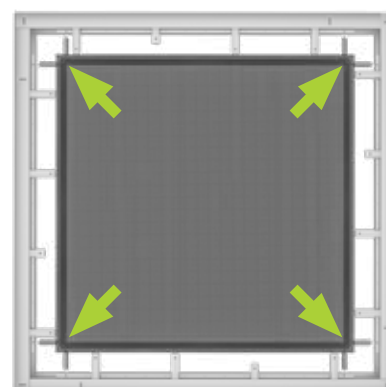
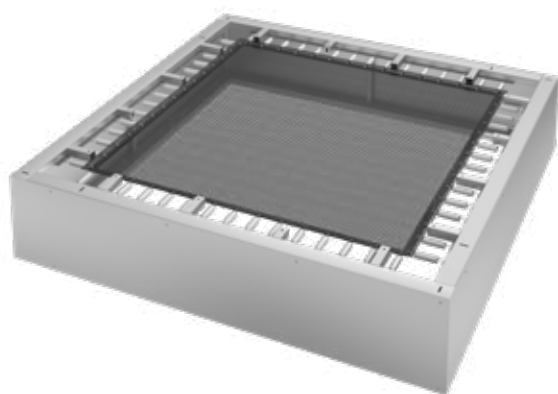
#### Assembling the frame

- 1 Assembling of metal frame is done outside the ground hole. Frame is composed of 4 equal metal plates, first take 2 pieces and push them together in prepared holes on the frame (it is click system - they will assemble together). Follow the same procedure with 3<sup>rd</sup> and 4<sup>th</sup> metal plate, so that you get square metal frame. No additional screws are needed.



#### Fitting the jumping mat & installing the springs

- 2 Lay the jumping mat inside the frame of the trampoline. In order to make the installation of the jumping mat easier, put the eight springs in the corners of the jumping mat and attach all eight springs on these locations first. You must attach springs to the wire which is sewn in jumping mat. Use spring tool to help you attaching springs on the frame. Continue by attaching springs from the corners to the middle of the mat on all four sides until all springs are attached. As there is no extra mark of the position of the springs on the jumping mat just follow the linear line of springs according to the holes on the frame. Be sure that all 60 spring hooks are properly and well attached.



**Important:**

Be sure all spring hooks are well attached to the frame.

## Digging the trampoline pit

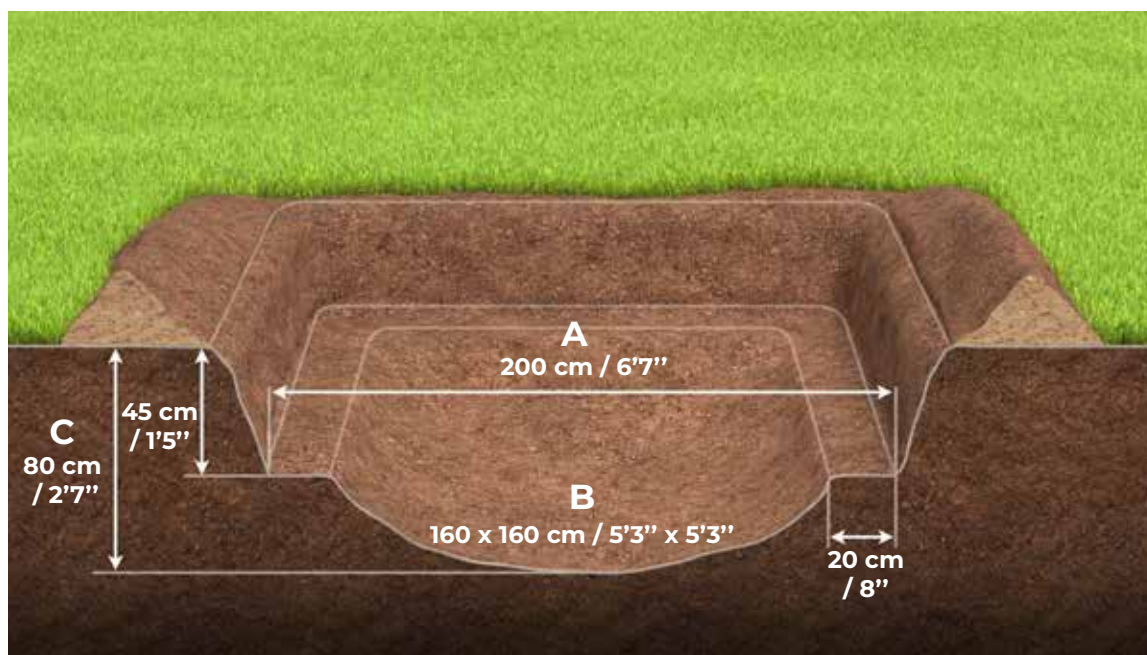
3

Position the frame on the location you chose and mark the position on the ground. It's best to mark out a hole a bit wider than the diameter of your trampoline. This will make it easier for you to put the frame in and find the right level. Dig the pit to the following dimensions described in instructions manual.

The hole should be 80 cm / 2'7" deep, 200 cm / 6'7" wide and 200 cm / 6'7" long. First dig the outer hole to create a ledge for your trampoline frame, which needs to be 45 cm / 1'5" deep. Continue by digging the inner hole according to the dimensions of your trampoline, with a bowl-shaped bottom.

The inner hole should be 40 cm / 1'4" narrower than the trampoline size. This will leave a 20 cm / 8" ledge all around on which the trampoline will sit.

TRAMPOLINE SIZE		
Dimension A – Trampoline size	Dimension B – Inner hole	Dimension C – Total depth
6'7" x 6'7" / 200 x 200 cm	160 x 160 cm / 5'3" x 5'3"	80 cm / 2'7"



The hole should not accumulate water (in which case the drainage is necessary) and it should be possible to clean during maintenance.

### AKROBAT HINT:

It's a relatively easy task to hand dig the hole for smaller size trampolines, but it would be best to hire a mini digger able to excavate most of the soil and leave you with the finishing touches.

Note: You will need to save some of the soil for later.



## Place trampoline to the ground hole

4

You have metal frame with jumping mat ready to put it all together to the prepared hole in the ground. Level it to the right position.

There should be no gap between ground and your trampoline.

Finally, re-lay the saved soil around the trampoline and compact down as much as possible.

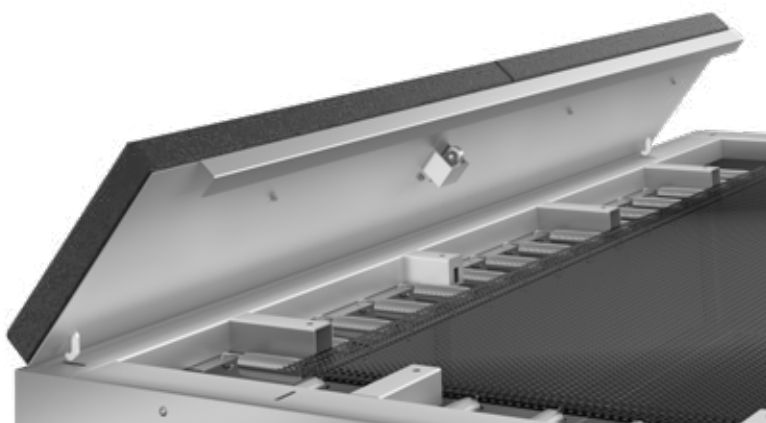


## Fix rubber tiles-frame plates on the frame

5

In the last phase you need to place frame/rubber tiles on the top of the metal frame. Two hooks in cover plates should fit directly in the holes on the metal frame. Then slowly lay down the rubber tiles to the metal frame. Part in the middle of the rubber tiles will fit directly to the prepped hole in the metal frame. All four rubber tiles are the same, so you can start assembling randomly.

In case of maintenance (changing springs or jumping mat), just lift rubber tiles for app. 45 degree and push it easily to yourself. Rubber tiles will »unlock« from the metal frame and you can remove it down from metal frame and then change spare parts.



### Important:

The final position of the trampoline should be flush with the ground.



## CONGRATULATIONS!

**Your Akrobat trampoline is now ready to be used. Enjoy!**

If this is your first trampoline, we advise you to start by learning the basic jumps described in this manual.



## 4. TRAMPOLINE MAINTENANCE

Check your trampoline before each season thoroughly – particularly the frame, springs, jumping mat and rubber tiles. We advise regular check-ups during the season as well. In contrary, damaged parts could be overlooked, which may result in severe accidents or injuries.

- All parts are well attached.
- All springs are well secured to the frame and the rings on the jumping mat.
- The trampoline has no damages, such as rips, holes, sharp, twisted or broken parts. If you notice any damage, change the parts immediately.

For the best maintenance of your trampoline, also make sure no animals are allowed on the trampoline as they could damage both the frame pad and the jumping mat.

The trampoline should be disassembled and withdrawn from use at once in case of any damage or missing parts until the defects are repaired or parts replaced.

Extreme weather conditions can impact the trampoline materials, therefore follow these recommendations:

- Remove the jumping mat during winter season as the weight of the snow could damage the mat.
- Protect the trampoline from direct heat, fire, sparks and fireworks
- Protect your trampoline from heavy rain and snow as well.

### **Cleaning the trampoline:**

All Akrobat trampoline mats and frame plates are made of durable high-quality materials and should not be cleaned with any aggressive cleaning products! Trampoline surfaces are best cleaned with mild soapy water and thoroughly rinsed with water afterwards.

**Remember, the trampoline should only be used by one person at the time!**



**Maximum user weight:**

**6'7" x 6'7" / 200 x 200 cm**

**100 kg / 220 lbs**

**PLEASE KEEP THIS MANUAL FOR LATER USE.**

## 5. JUMPING INSTRUCTIONS

Each jumper must start by learning slow and controlled jumps. Safe landings are the base of trampoline jumping skills and are important to learn at the beginning. Lack of these skills may result in severe injuries.

Both jumper and instructor should keep in mind that steady balance at each jump represents the base of successful trampoline jumping.

**The stopping technique is equally important as jumping.** Correct stopping represents one of the most important safety precautions in trampoline jumping. When losing control of the jump and/or balance the jumper has to react quickly to prevent injuries. In order to achieve this, the jumper should simply bend his knees before landing on the jumping mat. This is the safest way to stop the jump and prevent accidents.

While learning and training trampoline jumps, it is advised to have a persons standing around the trampoline in order to help the jumper if needed. Trampoline jumping is a physical strain and shouldn't last too long. A tired jumper can easily succumb to errors in jumping thus highly increasing risk of injury.

High trampoline jumps are considered advanced jumps and should not be allowed to inexperienced jumpers. It is extremely important to be sure that the height of the jump corresponds to the experience of the jumper.

### PLEASE NOTE:



Beginners should learn the basic body positions and practice the basic bounces described in this manual.



To learn how to balance and jump, stand in the middle of the jumping area and bounce softly up and down to control the movement. Increase the intensity gradually, returning to the same position on the jumping mat with each bounce.



Focus on the jumping mat when jumping, failing to do so may quickly result in losing balance and falling.

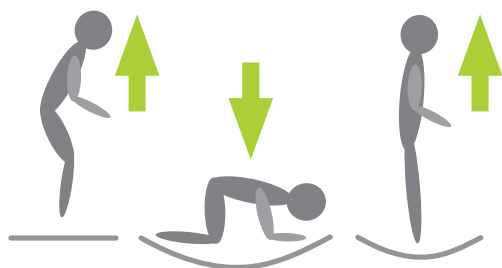
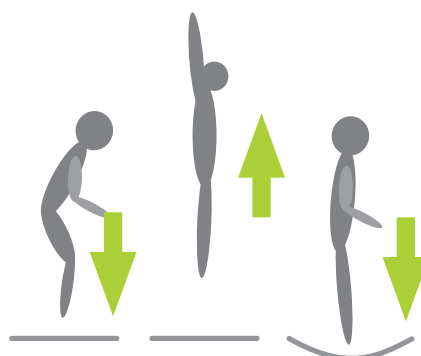


Do not perform somersaults without supervision! Somersaults should be carried out only by experienced jumpers under supervision of an expert and using appropriate safety measurements.

## 6. BASIC TRAMPOLINE JUMPS

### THE JUMPING JACK:

1. Start from a standing position with feet in shoulder width, head up and eyes on the trampoline mat.
2. Swing your hands forward, above your head and back in a circular motion.
3. Bring your feet together in mid-air and point your toes.
4. Land back on the center of the mat with your feet in shoulder width (the same as the starting position).

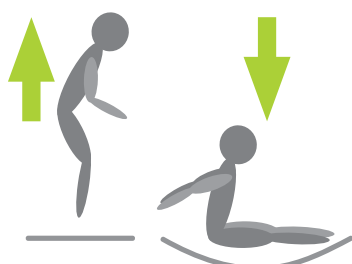
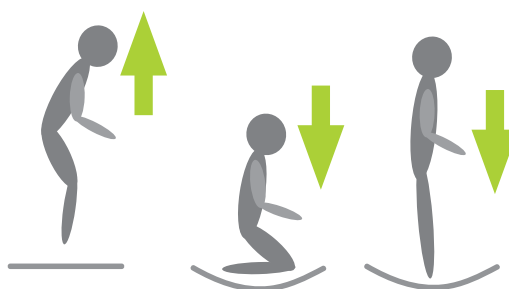


### THE FRONT DROP:

1. Start by softly bouncing up and down a few times.
2. Jump upwards and land with your hands and knees forward.
3. Push yourself off with your hands and jump back to the upright position.

### THE PRAYING MANTIS:

1. Start with a low bounce.
2. Land on your knees in shoulder width, keeping your back straight and keep your arms stretched out to maintain balance.
3. Bounce back to the starting position by using the bounce momentum and swinging your arms upwards.

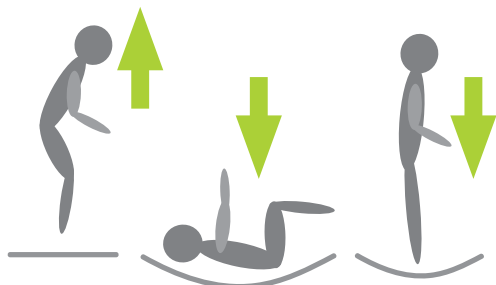
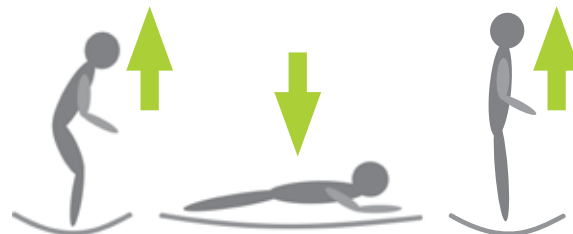


### BOTTOM BOUNCE:

1. Start with a basic starting position. Jump up, aiming to the center of the jumping mat.
2. Land with your legs stretched in front of you, with hands on both side of your hips and keep your back straight.
3. Push yourself up with your hands to rebound to the starting position.

### THE PANCAKE DROP:

1. Start off with a soft, low jump upwards.
2. Let yourself fall on your front, placing your hands on the jumping mat in front of you.
3. Push yourself up to the starting position.

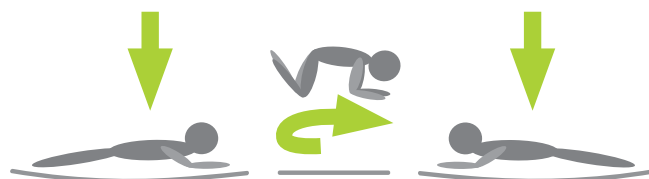


### THE TURTLE DROP:

1. Start with a soft upwards jump.
2. Land on your back, keeping your chin close to your chest and your knees bent. Keep your chin towards your chest as you land.
3. Kick your legs forward in order to jump up and land in the starting position.

### THE ROLLING STONE:

1. Start from the front drop position and push to the left or right with your arms to start turning.
2. Turn your head and shoulders in the direction that your body is turning.
3. Keep your back parallel with the jumping mat and your head straight.
4. Return to the lying position to finish the jump, lying in the opposite direction as at the beginning.



### THE FLYING BALLERINA:

1. Start with the sitting position.
2. Jump and turn your head left or right and swing your hands in the same direction to turn in the air.
3. Follow the motion with your hips to complete the turn.
4. Land in the sitting position to complete the jump.

You now master the basic jumps and are ready to jump even higher!

**But remember to always stay in control of your jumps.**

**ENJOY IN PURSUING YOUR PASSION FOR JUMPING!**



## IMPORTANT!

## FLOOR MATERIAL IN RELATION OF FALL HEIGHT AND FREE ZONE

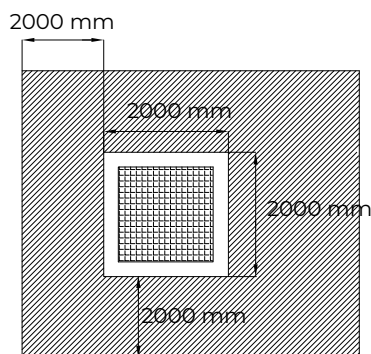
For this trampoline, a critical fall height of less than 1500 mm is assumed. The free-fall space must comply with the table below.

MATERIAL	DESCRIPTION	MINIMUM DEPTH	MAXIMUM FREE HEIGHT OF FALL
Turf/topsoil	-	-	100 cm*
Bark	20-80 mm particle size	30 cm	300 cm
Woodchip	5-30 mm particle size	30 cm	300 cm
Sand or gravel	0,25-8 mm grain size	30 cm	300 cm
Other materials	As tested according to standard EN 1177		

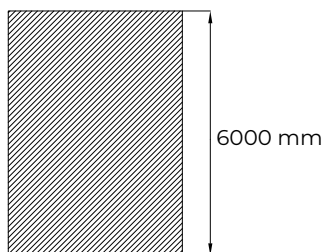
\*Turf as well as having aesthetic appeal also has some useful impact attenuating properties. Experience has shown that, if well maintained, it is normally effective for fall heights up to 1 m and can be used without the need to conduct a test. For fall heights above 1 m, the performance of turf as an impact attenuating surfacing is dependent upon local climatic conditions. Therefore, as there are significant regional variations in climate throughout Europe it is advised that guidelines are given at a national level.

Required space around and above the trampoline:

**FREE SPACE AROUND THE TRAMPOLINE** (see the table for impact absorbing ground material)



**FREE SPACE ABOVE THE JUMPING MAT**



Playground 200 x 200 cm

## REPORT OF REGULAR DAILY VISUAL TRAMPOLINE EXAMINATION

The purpose of inspection is identifying any obvious defects and sources of danger on the outside of the trampoline, which are easily visible from the ground without the use of auxiliary objects. This covers cleanness, various obstacles or objects that are close to the trampoline, missing parts, trampoline or jumping mat damages and excessive wear, etc.

Examination frequency: examinations should be performed daily before use and before each use.

DATE	HOUR	Trampoline is / is not suitable	Checked by	Signature	Notes

## REPORT OF MONTHLY OPERATIONAL TRAMPOLINE INSPECTION

The purpose of operational inspection is to check the trampoline in detail - it's stability and functionality. Especially identifying any obvious defects of wear due to vandalism and/or normal use of the trampoline. This includes surfacing, safety distance, installation of accessories, labelling, stability and the overall level of wear of the trampoline.

In case of damaged trampoline or it's parts, missing parts or other defects the trampoline must be removed from use until all the defects are repaired.

Incorrect maintenance will result in discontinuing the validity of the trampoline warranty and the manufacturer's liability for any accidents which may occur.

Examination frequency: examinations should be performed at least once a month.

DATE	HOUR	Trampoline is / is not suitable	Checked by	Signature	Notes

# MAIN ANNUAL INSPECTION REPORT

Purpose: The main inspection shall be carried out in accordance with manufacturer's instructions on maintenance in order to ensure the level of safety of the trampoline, its base, supporting structure and parts of the trampoline (e.g. wear and possible overall changes in the safety of the trampoline caused by improper changes or repair).

Failure to record regular inspections will result in discontinuing the validity of the trampoline warranty and the manufacturer's liability for any accidents which may occur.

Examination Period: at least once a year.

Reviewer: An authorized person by the manufacturer or an expert approved by the manufacturer.

REVIEWED ELEMENTS	YES	NO
<b>A. Trampoline base inspection</b>		
Visual inspection of the trampoline base: The trampoline is stable and on a levelled surface.		
<b>B. Trampoline construction inspection</b>		
Visual inspection of the metal construction		
Inspection of all structural elements and junctions: connecting elements, legs, rails, sockets, springs ...		
Conformity of the structural elements with the design check-up		
Condition of rubber tiles check-up		
<b>C. Jumping mat inspection</b>		
Visual inspection of the jumping mat		
<b>D. Rubber tiles inspection</b>		
Visual inspection of rubber tiles check-up		
Repair or replacement of damaged parts		
<b>E. Overview of safety instructions for the trampoline</b>		
<b>F. Remarks and observations</b> (any defects or damages must be defined and recorded in this field)		

Date and hour:

Inspected by:

Trampoline is / is not suitable

Signature



Črmošnjice 5b  
8000 Novo mesto  
Slovenia

E: [info@akrobat.com](mailto:info@akrobat.com)  
T: +386 730 800 60

[www.akrobat.com](http://www.akrobat.com)

